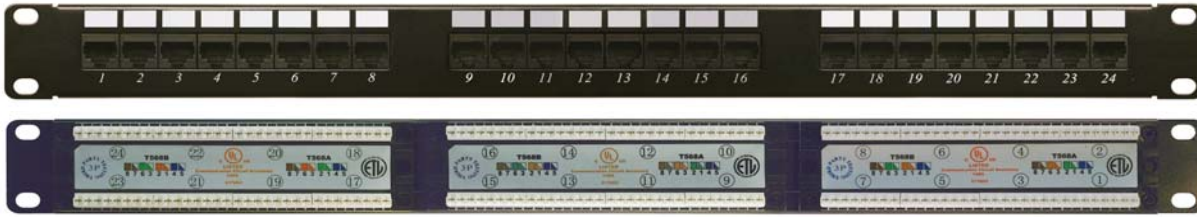


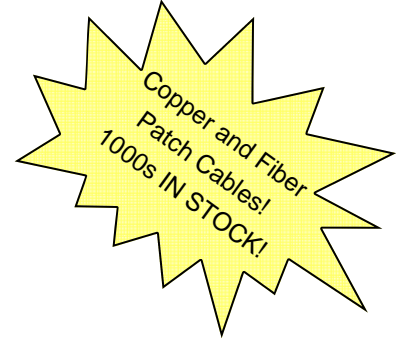
**MAY 2009
SPECIALS**



Spectrum™ Series Category 6 and Category 5E Patch Panels

Supports high-speed 100BaseT, ATM and gigabit Ethernet applications

- Rack mount design features wire management clips for easy cable routing
- Fully enclosed PC board protects against intrusion of dust and debris
- Includes a light-duty 110 punch tool and 110 stuffer caps for easy wire termination
- 50 micron gold contacts insure consistent performance
- Marked for both 568A and 568B wiring
- UL Listed

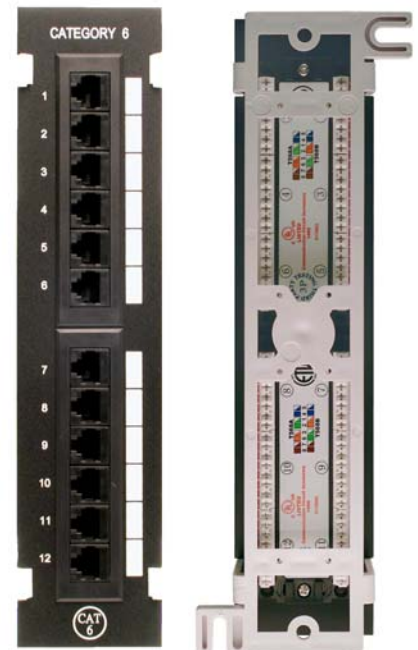


Part No.	Description	Dimensions (H x W x D)	Price
<i>Spectrum Plus™</i> Category 6 Patch Panels			
MP117HA128	CAT 6 110 Patch Panel, 568A/B, 12-Port	1.75" x 19" x 3.5" (1U)	\$45.00
MP117HA248	CAT 6 110 Patch Panel, 568A/B, 24-Port	1.75" x 19" x 3.5" (1U)	\$59.00
MP117HA488	CAT 6 110 Patch Panel, 568A/B, 48-Port	3.50" x 19" x 3.5" (2U)	\$115.00
MP117HA968	CAT 6 110 Patch Panel, 568A/B, 96-Port	7.00" x 19" x 3.5" (4U)	\$225.00
<i>Spectrum™</i> Category 5E Patch Panels			
MP155HA128	CAT 5E 110 Patch Panel, 568A/B, 12-Port	1.75" x 19" x 3.5" (1U)	\$38.00
MP155HA248	CAT 5E 110 Patch Panel, 568A/B, 24-Port	1.75" x 19" x 3.5" (1U)	\$45.00
MP155HA488	CAT 5E 110 Patch Panel, 568A/B, 48-Port	3.50" x 19" x 3.5" (2U)	\$89.00
MP155HA968	CAT 5E 110 Patch Panel, 568A/B, 96-Port	7.00" x 19" x 3.5" (4U)	\$165.00

Spectrum™ Series Category 6 and Category 5E Mini 110 Patch Panels

- Easy to wall-mount with included 89D bracket
- 50 micron gold contacts insure consistent performance
- Includes integrated wire management and light-duty 110 punch tool

Part No.	Description	Price
<i>Spectrum Plus™</i> Category 6 Mini Patch Panel		
MP117MA128	CAT 6 12-Port Mini Patch Panel	\$39.00
<i>Spectrum™</i> Category 5E Mini Patch Panel		
MP155MA128	CAT 5E 12-Port Mini Patch Panel	\$34.00



Hinged Wall Brackets



Part No.	Dimensions (W x D x H)	Price
FBA01	19" x 6" x 1.75" (1U)	\$14.50
FBA02	19" x 6" x 3.50" (2U)	\$18.50
FBA03	19" x 6" x 5.25" (3U)	\$21.00
FBA04	19" x 6" x 7.00" (4U)	\$24.00